

*“Not Quite
Charlie Dimmock!..”*



However...

I do follow in the footsteps of Geoff Hamilton and Peter Seabrook. We have all studied at the renowned Writtle College, one of the UK's leading horticultural colleges.

Writtle's Landscape and Garden Design degree course ensured that students became knowledgeable horticulturalists and plantmen as well as gaining design expertise in all elements of soft and hard landscaping.

Whether your garden project is large or small, throughout my fifteen years experience, I ensure that all these elements complement each other in the final design and construction.

*“A Well Designed
Garden will not only
Add Financial Value
and Enjoyment to
Your Home, but is
also An Investment
for The Future”*

IMPACT GARDEN DESIGN

Contact: Linda Munday **B.Sc (Hons)**
NCH (Hort)

19 High Street
Ixworth
Bury St Edmunds
Suffolk IP31 2HH

Tel: 01359 230416

Mobile: 07980 083534

Email:
lamundaygardendesign@fsmail.net



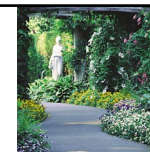
Construction undertaken in Association with:

**Impact Garden Design has developed
close links with Archley Paving who
have a wealth of experience and
craftsmanship in garden landscaping.**

Archley
paving



We are proud of our team that are dedicated to meeting all customer needs with premier quality products and service. Pathways, patios, raised beds, ponds, decking and other hard landscaping features will combine effortlessly with the soft landscaping aspects to produce your ultimate garden.



IMPACT GARDEN DESIGN



From Concept to
COMPLETION

From Concept to

COMPLETION

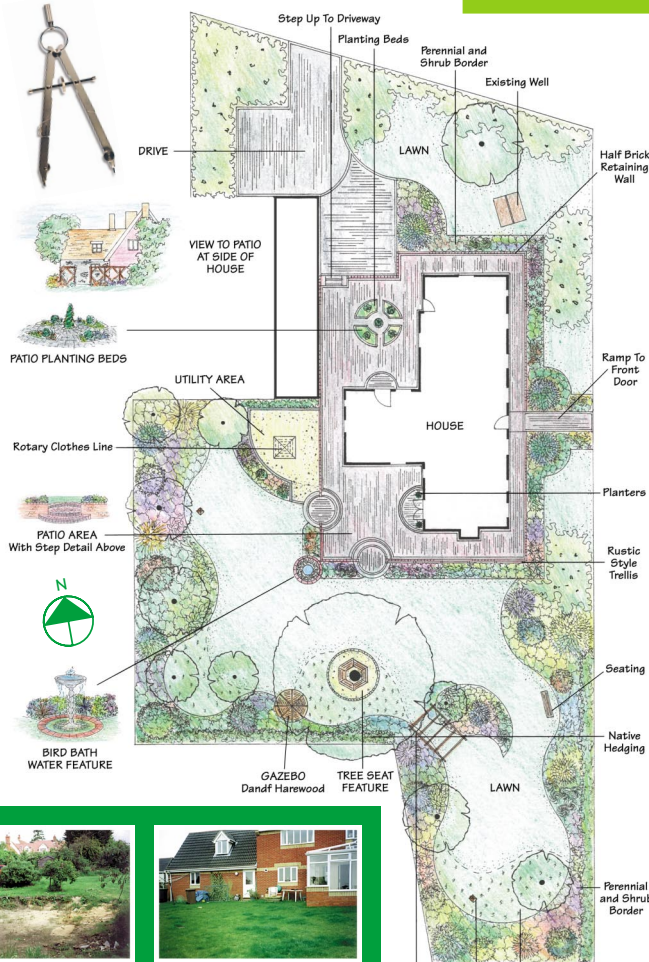
A TAILOR MADE DESIGN provides the framework of the garden that lays the foundations for its future development. Once you have the overall design this can either be implemented all at once or in stages when your budget permits.

Impact Garden Design specialises in private commissions for gardens of all sizes from courtyards to large country gardens, ranging from traditional and period through to contemporary styles. We have the knowledge and ability to transform your dreams into reality.

From driveways and front gardens that make a dramatic entrance to your home through to terraces, patios and lawns creating an ideal space for all the family to relax, dine and play - plus the all important finishing touches including planting, water features and lighting.

We handle everything in-house, from initial consultation and design, through to complete construction, planting and ongoing maintenance if required. Our service includes:

- A full creative design package - each project unique and personal.
- All projects undertaken by experienced craftsmen.
- Commitment to customer service.



PERGOLA
Grange
Colonnade

BIRD
TABLE

BULB
DRIFT



“The Garden is an Extension of the Home and is a Highly Valued Living Space”

We Offer

A comprehensive and professional garden design and landscaping service combined with sound horticultural knowledge and advice on all aspects of the garden to suit your budget and individual requirements. All work is undertaken by highly skilled construction teams and is carefully monitored throughout to ensure the work is carried out to your complete satisfaction.

The Design Service

We will visit a potential client to discuss their individual needs and budget requirements. We will then provide them with a fee proposal for a design plan of the garden.

Once invited to proceed we will carry out a full site survey and submit our conceptual ideas for discussion to ensure that the client is happy with our perception prior to the production of the final layout plan with a detailed planting design and schedule

Should they wish to implement all or part of the scheme we will prepare a quotation. Once the price has been approved a date to start work on the garden can be agreed. Whatever the size of the project the client is involved at all stages of the process.

Our Services include:

- Professional design and construction.
- All aspects of hard and soft landscaping.
- Water features and lighting.
- Planting schemes.
- Garden Restoration.
- Consultancy.

Before



After

